



# P.C. HO THEATRE

何伯釗劇院

5183 Sheppard Aveune East  
Toronto, Ontario  
M1B 5Z5

(416) 292-9293  
<http://www.cccgt.org>

# A COMMUNITY OF CULTURE

*The Chinese Cultural Centre of Greater Toronto is a non-profit, non-political organization. It was established in 1998 and is a part of a multi-purpose community complex in Scarborough. Built in 2006, the P.C. Ho Theatre is a state-of-the-art 626 seat proscenium theatre, equipped with the crew and technology to put on small to large scale shows.*

*Our theatre has an active rental service that brings in a variety of unusual and exciting events all year round. The facility can accommodate a wide range of performing-arts events from concerts, dance recitals, and theatre performances, to educational seminars, teleconferences, and town-hall meetings. The theatre has also recently become a popular location source for the broadcasting industry.*

*Also available for rental in the Phase II of the building are the upper and lower lobbies, as well as the multi-purpose hall.*

何伯釗劇院建於 2006 年，設有 626 個座位，具備舉辦各類型的表演所需的工作人員及技術。

劇院可供公眾租用，每年均會舉辦各種多元化、新穎的活動。劇院可供舉辦廣泛類型的演出節目，包括演唱會、舞蹈及活劇，甚至教育講座、電話會議及市政會議。近年，劇院亦成為受傳媒歡迎的拍攝地點。

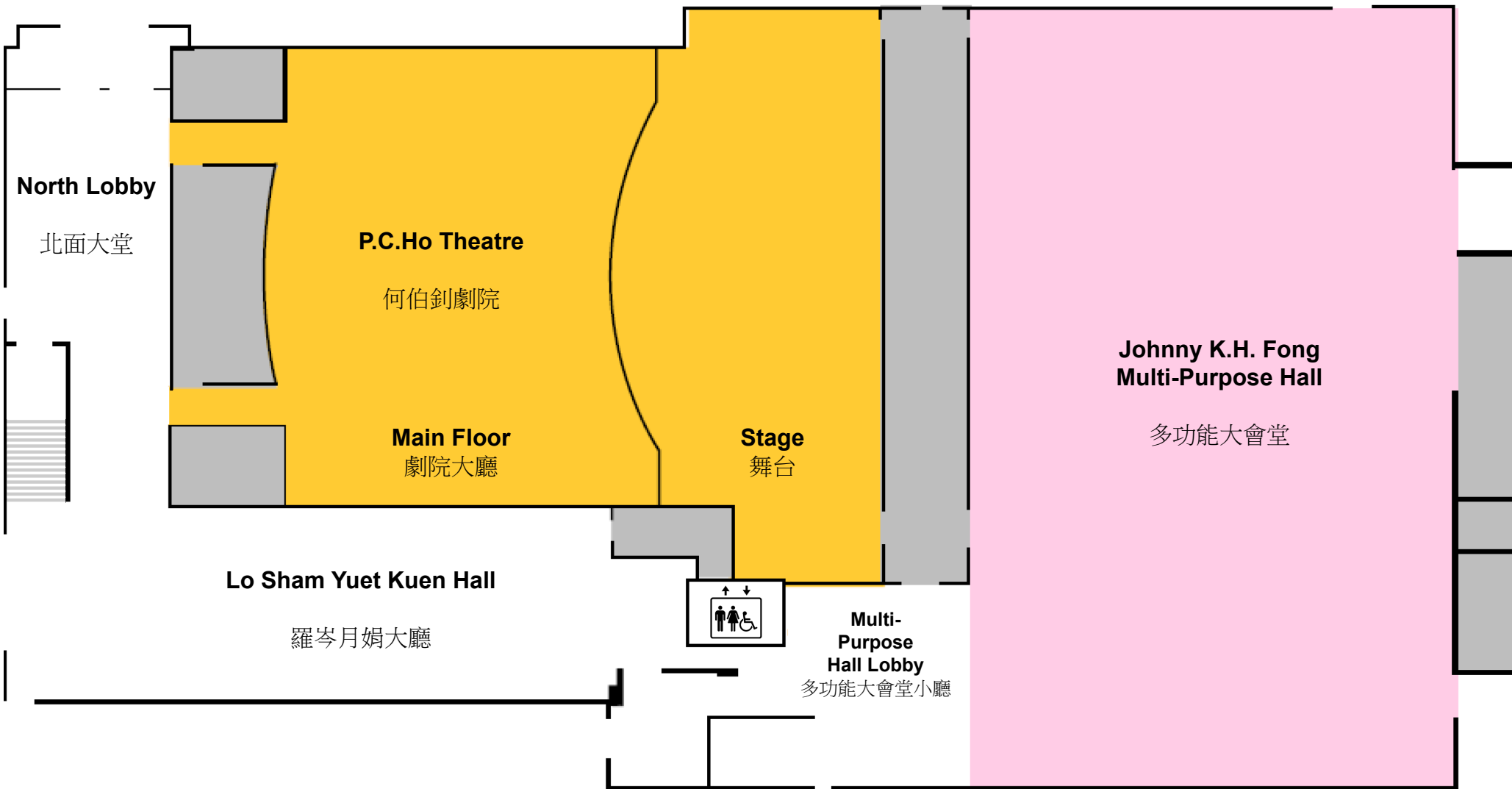
除劇院外，第二期大樓內的上下層大堂及多功能大會堂亦可租用。







# FLOOR PLAN – FIRST FLOOR

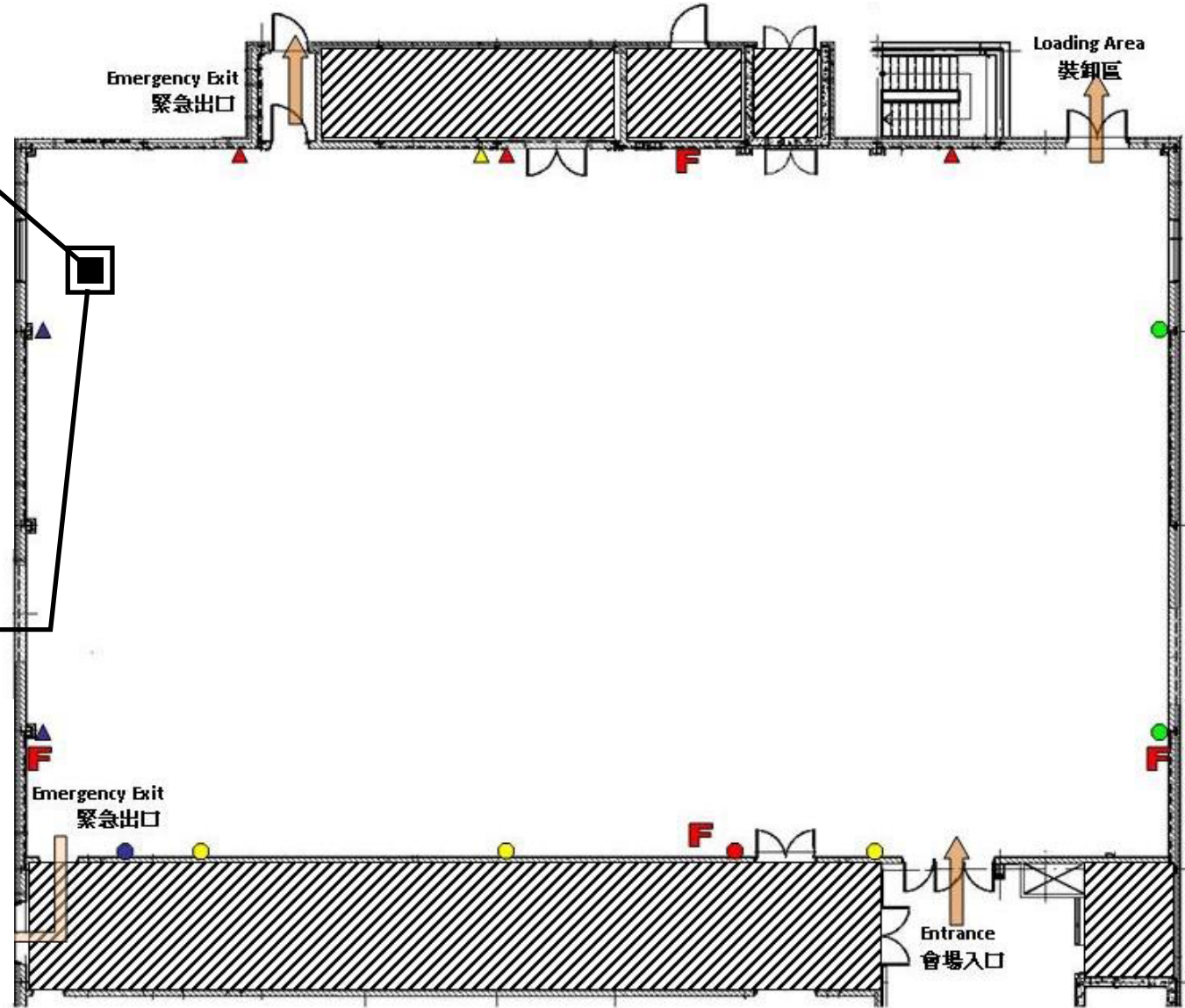


# JOHNNY K.H. FONG - MPH

## MULTI-PURPOSE HALL

▸ 116' x 72' / 8,500 sq. ft

*The Multi-Purpose Hall lives up to its name having ranged from hosting multiple high profile banquets, to acting as the backstage for performers, to being the home to the cultural centre's annual Summerfest, and even the site of basketball and boxing games!*



Actual Size of Hall: 116 ft x 72 ft

Scale 1 feet = 0.064 inches in figure

Last updated:



# FLOOR PLAN – SECOND FLOOR

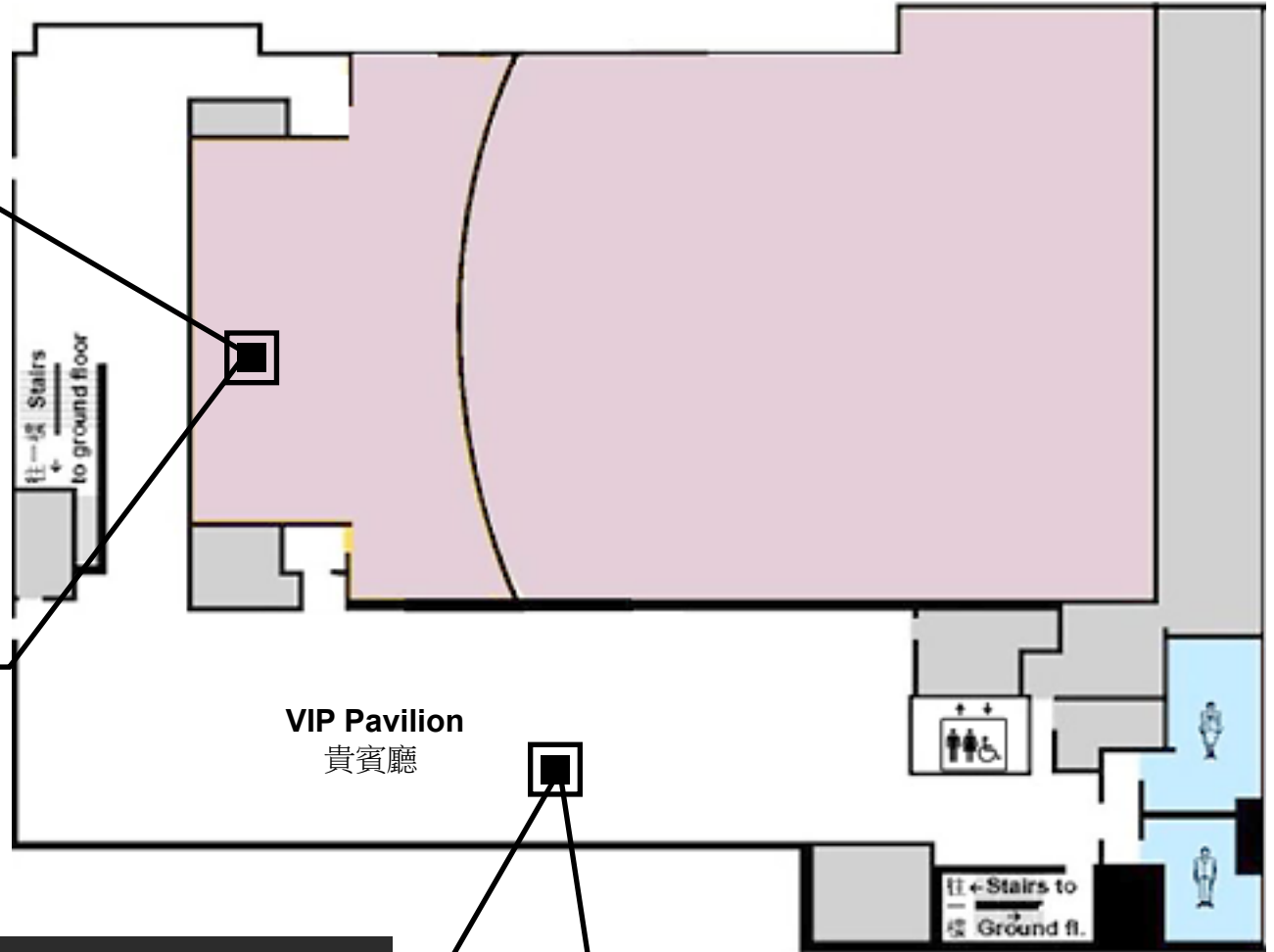
## P.C HO THEATRE BALCONY

▸ seating capacity: 236



The second floor of Phase II includes the balcony level of the P.C. Ho Theatre with 236 seats (rows P to X).

Right outside is the South Lobby (also known as the Theatre Upper Lobby), which has been used for press conferences, banquets, and wedding receptions.



## VIP PAVILION

▸ seating capacity: 180

▸ 100' x 27' / 2,700 sq. ft

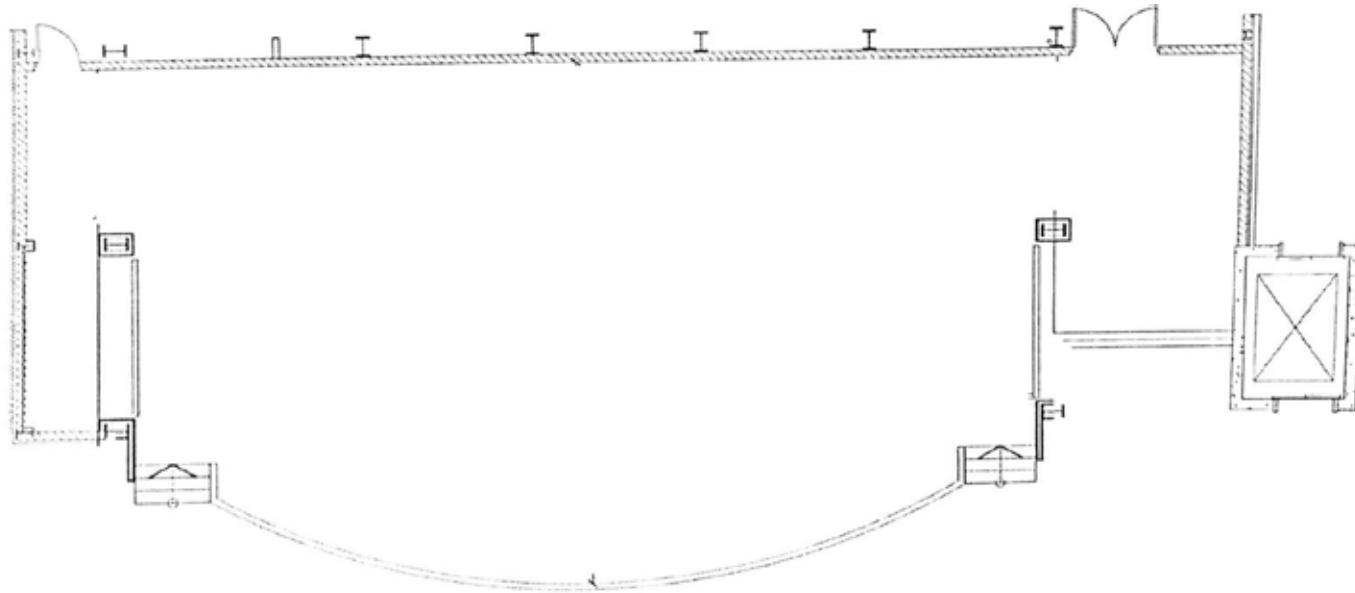
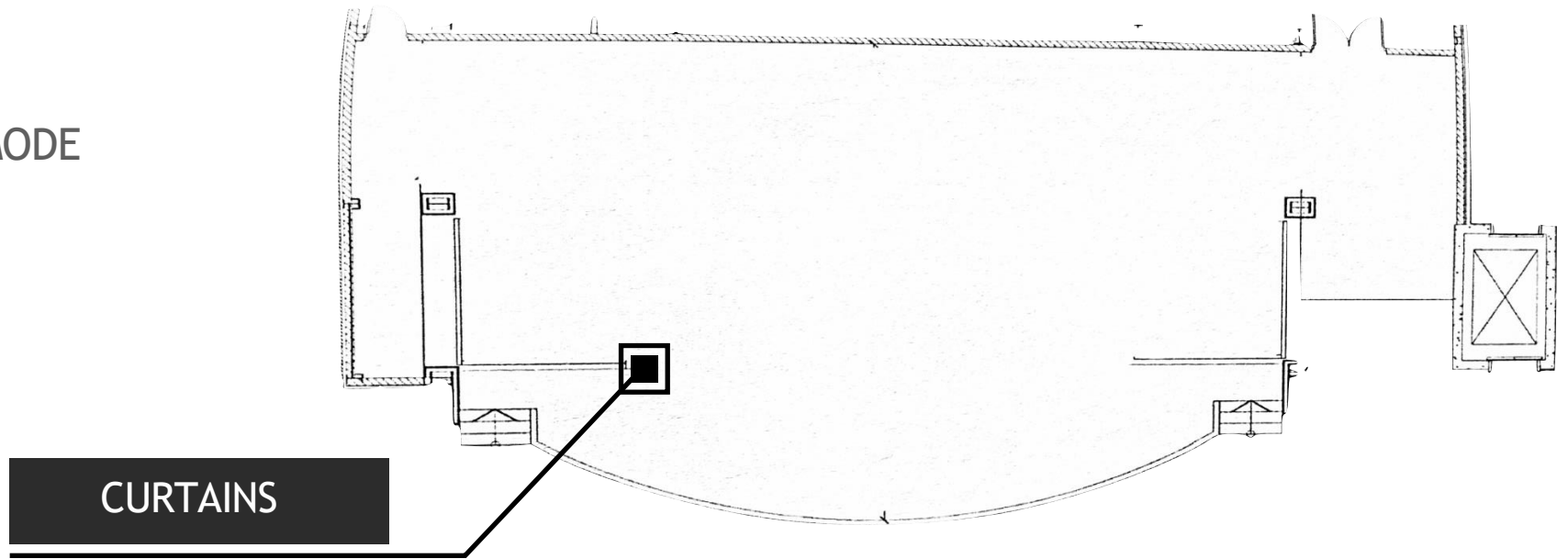




# STAGE PLAN:

## THEATRE MODE

- 43' x 38'
- includes curtains



## CONCERT MODE

- 65' x 38'

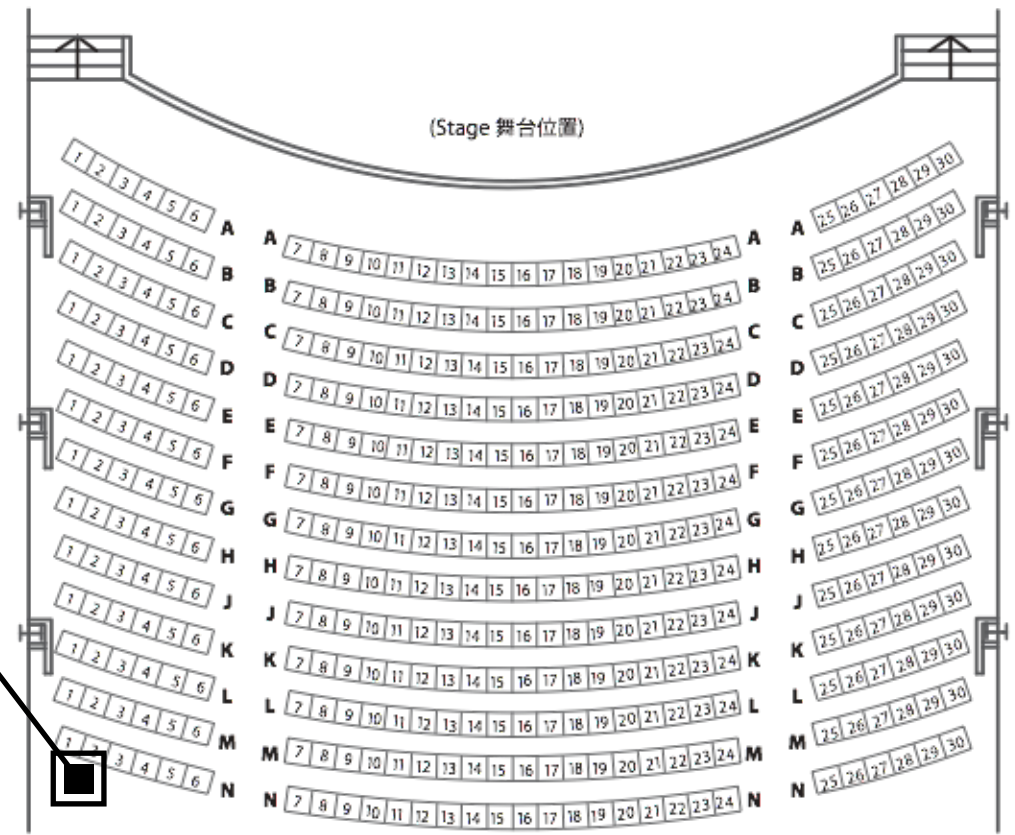


# SEATING PLAN:

Total seat count: 626

## MAIN FLOOR SEATING

- ▶ seat capacity: 390
- ▶ rows A - N

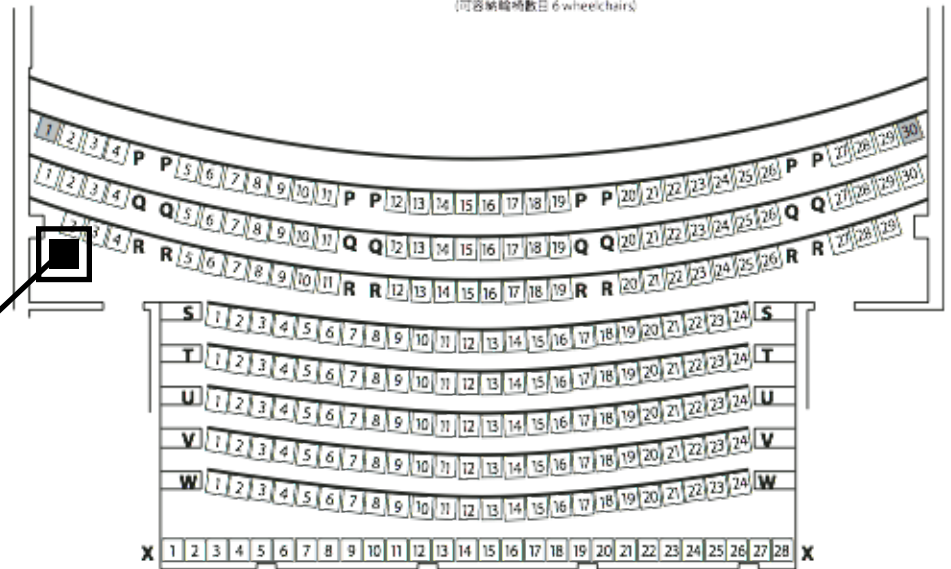


**Main Floor 大堂** Capacity 座位數目 390 seats  
(可容納輪椅數目 6 wheelchairs)



## BALCONY

- ▶ seat capacity: 236
- ▶ rows P - X



**Balcony 樓座** Capacity 座位數目 236 seats  
■ Obstructed seats 視線受阻座位 2



# THEATRE FEATURES:

## TECHNICAL EXPERTISE:

Our technical experts will ensure that the show runs smoothly.

- *audio*
- *lighting*
- *rigging*
- *stage support*

Minimum of 3 technicians required.

## VIP DRESSING ROOMS

▸ *550 sq. ft*

Includes *two* spacious dressing rooms; each fitted with *three* separate make-up rooms and a bathroom for convenience.



MAKE-UP ROOM

## USHERS:

Our ushers maintain order in the theatre before and after the show to make the experience as pleasant as possible for all of those involved.

Their duties include:

- *collecting tickets*
- *helping to prevent audience misconduct*
- *improving security*

Minimum of 5 ushers required.

## GREENROOM

▸ *1100 sq. ft*

A spacious area for lounging before a show; equipped with tables, chairs, and vanity mirrors.





# THEATRE AUDIO, VIDEO, & LIGHTING FEATURES

## AUDIO:

### *Speakers*

Main: 6 - Eastern Acoustic Works model KF695z (3-way)  
3 - Eastern Acoustic Works model EAW AB600z (Subwoofer)  
Auxiliary: 2 - Eastern Acoustic Works model JFX100 (2-way)  
Foldback: 2 - Eastern Acoustic Works model SM129z (2-way)

### *Amplifiers*

Main: 6 - Crown model CTs 1200  
3 - Crown model CTs 2000  
Auxiliary: 2 - Crown model CTs 1200

### *Mixers*

Microphone Mixing: 1 - Yamaha Model M7CL-48 digital console  
Digital Processors: 4 - BSS model BLU-80 Soundweb ` London `  
2 - BSS model BLU-32 Soundweb ` London `

### *Playback & Recording*

CD Player: 1 - Tascam Model MD-CD-1  
Laptop Playback: 1 - Exton DA6A Audio Distribution

### *Microphones*

Stage: 2 - AKG model D880 supercardioid dynamic  
Podium: 1 - Countryman model M4HP5VS18EB hypercardioid  
Wireless: 2 - AKG model WMS40

### *Intercom System:*

6 - Clear - Com Intercom Systems

## VIDEO:

2K Projector: 1 - SANYO - PLC-HF-10000L  
Projection Screen: 1 - Draper model "Paragon" - Viewing Area 177"x236"  
Video Playback: VMIX - 4K 21.00.55



## LIGHTING:

### *ETC Control Console Features:*

- 24 sub-masters potentiometers
- 48 channels two-scene preset operation, 96 single scene preset operation
- 800 channels
- 600 cues per show
- Timed split cross-faders
- Blackout function
- Grand master

### *Dimmers:*

- Stage Lighting Circuits: 276 @ 2.4kW each
- House Lighting Circuits: 12 @ 2.4kW each

### *Luminaries:*

- Ellipsoidal Reflector Spotlights
  - 10 - ETC Source Four 450 luminaries with 750 watt and iris
  - 10 - ETC Source Four 436 luminaries with 750 watt lamp
  - 24 - ETC Source Four 426 luminaries with 750 watt lamp
  - 18 - ETC Source Four 419 luminaries with 750 watt lamp

### *Variable Focus Ellipsoidal Reflector Spotlights*

- 24 - ETC Source Four 25/50 Zoom luminaries with 750 watt and iris

### *Fresnel Spotlights*

- 30 - ETC Source Four Parnel with 750 watt lamp

### *Cyc Fixtures*

- 6 - Strand Iris 3 with 1500W FDB lamps

### *Cyclorama*

- Width: 35'
- Height: 26' 1" total
  - Top border height (obstructed view) 6'7"
  - Viewable height 19'6"

# ADDITIONAL FEATURES:

## LIGHTING

Cyclorama: 35 26'1"

Dimmers, luminaries, follow spotlight.

## PROJECTOR

Includes a frontal-projection multimedia projector, and the projection screen installed at the back of the stage.

## VIDEO

at an additional cost:

- audio-feed recording
- camera/cameraman

## SOUND

Speakers, amplifiers, and mixers. We also have playback & recording system (cd/cassette), as well as microphones (stage, podium, and wireless) at an additional cost, and an intercom system.

## WIRE RACKS

8' x 2'

- 30

7' x 2'

- 24

6' x 2'

- 13

## DIVIDERS

6' x 2'

- 9 panel (3)
- 7 panel (3)
- 5 panel (2)

7.5' x 2'

- 9 panel (1)
- 7 panel (2)







5183 Sheppard Ave E, Toronto, ON M1B 5Z5

(416) 292-9293

Theatre Reception: ext 230

Theatre Manager: ext 244

<http://www.cccgt.org>